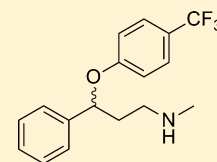


Classics in Chemical Neuroscience: Fluoxetine (Prozac)

Cody J. Wenthur,[†] Megan R. Bennett,[†] and Craig W. Lindsley^{*,†,‡,§}[†]Department of Pharmacology, Vanderbilt University Medical Center, Nashville, Tennessee 37232-6600, United States[‡]Department of Chemistry, Vanderbilt University, Nashville, Tennessee 37232, United States[§]Vanderbilt Center for Neuroscience Drug Discovery, Nashville, Tennessee 37232-6600, United States

ABSTRACT: Fluoxetine (Prozac) was the first major breakthrough for the treatment of depression since the introduction of tricyclic antidepressants (TCAs) and monoamine oxidase inhibitors (MAOIs) nearly 30 years earlier. It was the first selective serotonin reuptake inhibitor (SSRI) approved by the United States Food and Drug Administration, offering superior efficacy and reduced side effects relative to TCAs and MAOIs. Though a debate remains regarding the exact mechanism by which the clinical efficacy of fluoxetine is manifested, the importance of fluoxetine and related SSRIs to the field is unquestionable. The trade name Prozac has permeated popular culture, helping to raise awareness of depression and to diminish the prevalence of long-standing stigmas associated with this illness. In this Review, we will showcase the history and importance of fluoxetine to neuroscience in general, as well as for the treatment of depression, and review the synthesis, pharmacology, drug metabolism, and adverse effects of fluoxetine.

fluoxetine (ProzacTM), 1

KEYWORDS: Fluoxetine, Prozac, antidepressant, depression, SSRI, serotonin

Depression is a common and recurring psychiatric syndrome, marked by episodes of low mood, poor self-esteem, and diminished interest and pleasure in most activities. Depression currently affects over 120 million people worldwide (including 1 in 10 Americans), and the number of patients diagnosed is steadily increasing at a rate of about 20% per year.^{1–12} The prevalence and severity of this illness leads to a correspondingly large socioeconomic impact, costing United States businesses alone over \$63 billion per year as a result of low productivity, absenteeism, and treatment costs.^{1–14} Depression typically first manifests between the ages of 15 and 30 years, with an additional peak of onset between 30 and 45 years; however, depression can occur at any age. It is important to note that not all depression is necessarily a psychiatric disorder, as depressed mood can result from certain life events, medical treatments, and can present secondary to a nonpsychiatric illness. However, major depressive disorder (MDD) is a disabling condition that affects an individual's family, work, sleeping and eating habits, and overall health.^{1–14} Significantly, over 5% of patients diagnosed with MDD commit suicide, and the majority of suicides in the United States (about 60%) are carried out by patients with depression or a related mood disorder. Patients with depression often feel stigmatized and fail to seek treatment. This reticence, combined with a lack of validated biological markers for depression, likely contribute to the fact that an estimated 80% of people with symptoms of clinical depression are currently going untreated.^{1–14}

Depression is as old as mankind, and descriptions of the disorder can be traced as far back as the Greek physician Hippocrates, who, in the fourth century, diagnosed the disorder as melancholia, (literally meaning “black bile” in Greek—derived from the concept of the four humors).¹⁵ In his classic *Aphorisms*, Hippocrates diagnosed “fear and despondencies, if they last a long time” as melancholia. This terminology remained in medical texts and as a diagnosis until the 17th

century when the term depression (from the Latin *deprimere*, “to press down”) was employed by Delasiauve in medical texts to describe the “lowering of emotional functions”.¹⁵ This terminology eventually rose to prominence, and was formally added to the *Diagnostic and Statistical Manual for Mental Disorders* (DSM-I) in 1952. The designation “major depressive disorder” was added to the DSM-III in 1980.^{4,15}

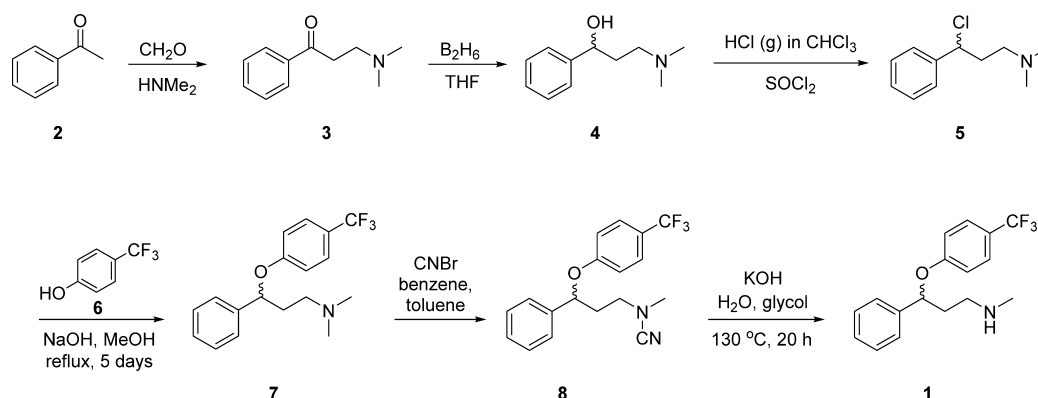
Criteria for diagnosing depression are found in the DSM-5 and World Health Organization's (WHO) ICD-10; both utilize the term “depressive episode” for singular, and “recurrent depressive disorder” for repeated depressive episodes.^{4,16} The ICD-10 defines three depressive symptoms (depressed mood, anhedonia and reduced energy), with two symptoms needing to be present to render the diagnosis.¹⁶ In contrast, the DSM-5 lists only two symptoms (depressed mood and anhedonia), and only one must be present for a diagnosis of depressive disorder.⁴ Major depressive disorder, also referred to as clinical depression, major depression, and recurrent depression, is characterized by either a single or recurrent episode of severely depressed mood that persists for at least 2 weeks.¹⁰ In addition, the DSM-5 distinguishes five subtypes of MDD: melancholic depression, atypical depression, catatonic depression, postpartum depression, and seasonal affective disorder.⁴ Treatment for MDD falls into three categories: psychotherapy (cognitive behavioral therapy and interpersonal therapy), electroconvulsive therapy, and antidepressant medications.^{1–16} Among the medications approved to treat MDD, perhaps none is better known than fluoxetine (Prozac) 1. In this Review, we will provide an overview of the importance of 1 to the treatment of depression, as well as other CNS disorders, and will capture

Received: October 17, 2013

Revised: November 8, 2013

Published: November 9, 2013

Scheme 1. Original Lilly Synthesis of Racemic Fluoxetine (1) by Molloy and Schmiegel from 1982

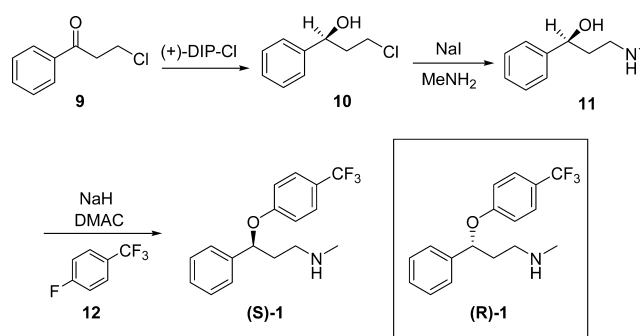


widely dispersed data into one easily accessible format for the “Classics in Chemical Neuroscience” series.

CHEMICAL SYNTHESIS

Fluoxetine, (*R,S*)-*N*-methyl-3-phenyl-3-(4-(trifluoromethyl)phenoxy)propan-1-amine (CAS No: [54910-89-3]), is a low molecular weight, racemic phenoxyphenylpropylamine (MW = 309.3) with a lone hydrogen bond donor, potentially two hydrogen bond acceptors, and a cLogP of 4.2. Thus, fluoxetine conforms to Lipinski's rules and displays excellent DMPK parameters and CNS penetration. The original synthetic route to racemic fluoxetine **1** was reported by Molloy and Schmiegel in 1982 (though filed in 1974) in US 4,314,081 (Scheme 1).¹⁷ The synthesis employed a Mannich reaction with acetophenone **2** to provide β -dimethylaminopropiophenone **3** as an oil. **3** was dissolved then dissolved in THF and added dropwise to a THF solution of 4 equiv of diborane, and allowed to stir overnight. An additional equivalent of diborane was then added and allowed to once again stir overnight. Acidic workup then provided the key racemic secondary alcohol **4**. Alcohol **4** was then dissolved in CHCl₃, and saturated with anhydrous HCl gas while SO₂Cl was added dropwise to maintain reflux for ~5 h. After evaporation of the solvent, **5** was collected as a crystalline hydrochloride salt. **5** was then added to an alkaline solution of **6** and refluxed for 5 days to afford phenoxy ether **7**. Classical Von Braun degradation of the dimethylamino moiety, through the *N*-cyano derivative **8** and subsequent basic hydrolysis, provided racemic fluoxetine **1** as a free base. Importantly, the first salt form of fluoxetine (**1**) tested in serotonin reuptake assays in the early 1970s was the oxalate salt (LY82816); however, the marketed version is the hydrochloride salt (fluoxetine hydrochloride (LY110140), or Prozac).²¹

As the racemate, **1** has a published K_i of 17 nM for 5-HT uptake in rat brain synaptosomes in vitro.²¹ It had been previously established that the eudismic ratio (the ratio of affinities or activities of two enantiomers) of **1** is near unity (ratio of (*R*):(*S*) is 48:52).^{23,24} This prompted researchers at Lilly, led by Robertson, to synthesize and investigate the pharmacology of the individual (*R*)- and (*S*)-enantiomers of fluoxetine, (*R*)-**1** and (*S*)-**1**, respectively.²⁵ At that time, pioneering work from the Brown lab in asymmetric reduction chemistry enabled rapid access to chiral alcohols in high enantiomeric purity. In Robertson's work (Scheme 2), reduction of 3-chloro-1-phenylpropan-1-one **9** with (+)-diisopinocampheylchloroborane ((+)-DIP-Cl) afforded the (*S*)-alcohol **10** in high enantiomeric excess (% ee). Displacement of the chloride with methylamine proved challenging, so a

Scheme 2. Original Lilly asymmetric synthesis of (*S*)-fluoxetine, (*S*)-**1**, by Robertson from 1988

Finkelstein reaction was employed to prepare the corresponding iodide in situ, followed by displacement with methylamine to provide **11**. This material was then deprotonated with NaH in DMAC, followed by the addition of 1-fluoro-4-(trifluoromethyl)benzene **12** to deliver (*S*)-fluoxetine (*S*)-**1** in a 96:4 *S*:*R* ratio. As only (+)-DIP-Cl was available, this asymmetric synthesis only allowed access to (*S*)-fluoxetine. In order to access (*R*)-fluoxetine (*R*)-**1**, Robertson and co-workers employed classical resolution techniques (fractional recrystallization) of the *D*- and *L*-mandelic acid salts of racemic **1**. After conversion to the corresponding (*R*)-**1**-(1-naphthyl)ethyl ureas, HPLC and NMR confirmed that (*S*)-fluoxetine (*S*)-**1** was arrived at in a >99:1 ratio of *S*:*R* enantiomers, and (*R*)-fluoxetine (*R*)-**1** was arrived at in a 1.5:98.5 ratio of *S*:*R* enantiomers. Interestingly, both enantiomers were found to be essentially equipotent in vitro (K_i 's of 21 nM and 33 nM, respectively, for the (*S*)-**1** and (*R*)-**1**), and both are equipotent in a number of in vivo preclinical models.²⁵ This initial effort spawned numerous asymmetric syntheses of (*S*)-**1** and (*R*)-**1**, employing more versatile catalysts that could produce both enantiomers via reduction of prochiral ketone **9**.^{26–28} Other asymmetric approaches installed chirality via a Sharpless asymmetric epoxidation, a Sharpless asymmetric hydroxylation, an oxidative kinetic resolution, an asymmetric carbonyl-ene reaction, or ruthenium-catalyzed allylic alkylation, to list but a few.^{29–33} In addition, chirality of the benzyl alcohol has also been established by enzymatic reduction and lipase-mediated enzymatic resolution.^{34–39} Finally, flow chemistry techniques have recently been applied to the preparation of **1**.⁴⁰

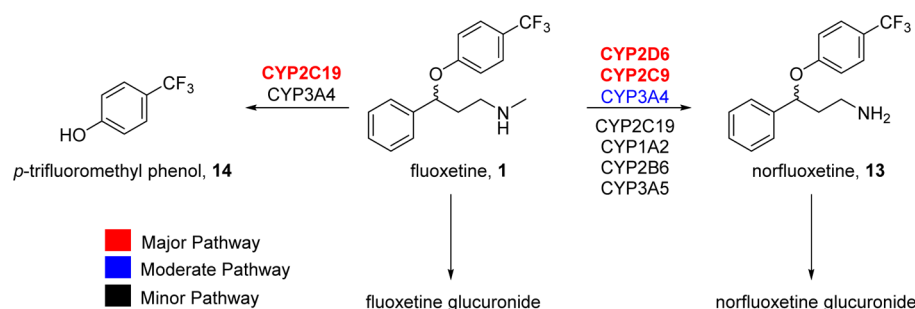


Figure 1. Structures of the oxidative and conjugative metabolites of fluoxetine **1**. The major metabolite is *N*-desmethylfluoxetine **13**, equipotent to **1**, but with a significantly longer half-life. The phenolic metabolite **14** is inactive. The single enantiomers (*S*)-**1** and (*R*)-**1** showed divergent 2D6 metabolism.

MANUFACTURING INFORMATION

Fluoxetine is the generic name of the drug **1**, which is manufactured by Eli Lilly & Co. under brand name Prozac (other brand names employed for fluoxetine include Zactan, Lovan, Fludac Flutine, Fluoxin, Philozac, Fluxil, Fontex, and many others).^{41,42} Fluoxetine was first synthesized in 1971, first disclosed in 1974 as LY110140, approved by the United States Food and Drug Administration (FDA) on December 29, 1987, and launched under the trade name Prozac in January 1988. Eli Lilly sells fluoxetine in 10, 20, and 40 mg yellow and pale-green tablets, along with a 20 mg/5 mL oral syrup.⁴¹ There are a plethora of generic manufacturers of 10–40 mg bioequivalent fluoxetine: Sandoz (approved 2001), Dr. Reddys Lab (approved 2001), Teva (approved 2002), Mylan (approved 2002), Mallinckrodt (approved 2002), Heritage Pharms (approved 2012), Alembic Pharms (approved 2009), Aurobindo Pharma (approved 2008), and many others. As of 2005, Prozac had been prescribed to more than 40 million patients worldwide and amassed over US \$22 billion in sales. Annual sales peaked in 1998 with sales of US \$2.8 billion; however, upon patent expiration in 2001, Eli Lilly lost US \$35 million of its market value in a single day, and about 90% of Prozac prescriptions over the course of the first year with generic competition. While current sales figures for fluoxetine are difficult to ascertain precisely, worldwide sales are estimated to exceed US \$400 million, with over 24 million generic prescriptions for **1** filled in 2010 in the United States and around 6 million in the United Kingdom.^{18–23,41,42}

DRUG METABOLISM

Fluoxetine **1** is almost completely absorbed following oral administration (%F = 70–90), is highly CNS-penetrant (brain/plasma ratio in humans of 2.6:1) and possesses the largest volume of distribution (V_d) of any SSRI (between 14 and 100 L/kg).⁴³ Fluoxetine displays low plasma protein binding ($F_u = 0.05$) and a long half-life (1–3 days for acute dosing and 4–6 days upon chronic dosing). Due to the long half-life, **1** requires between 1 and 22 months to achieve steady state.

Upon administration, fluoxetine **1** is subjected to significant hepatic metabolism by cytochrome P₄₅₀ enzymes (CYPs) forming a number of metabolites (Figure 1), and displays nonlinear kinetics. Fluoxetine is primarily excreted (80%) as either parent **1**, *N*-desmethylfluoxetine (norfluoxetine) **13**, or as glucuronides of both **1** and **13**.^{43–45} The metabolites have been characterized, and while the phenolic metabolite **14** (generated via oxidative *O*-dealkylation by CYPs 2C19 and 3A4) is inactive, the norfluoxetine metabolite **13**, generated by principally by CYP2D6 (with contributions from 2C9, 3A4,

and other CYPs), possesses comparable pharmacology to **1**, yet possesses a significantly longer half-life ($t_{1/2} = 4–16$ days). In fact, plasma concentrations of norfluoxetine **13** are typically 100–130% of **1**, and plasma levels of both **1** and **13** can persist for more than 3 weeks after discontinuation of treatment.^{43–45} The key role of 2D6 in the metabolism of **1** was confirmed in humans with poor 2D6 metabolizers showing increased concentrations of **1**, while extensive 2D6 metabolizers showed decreased concentrations of **1**.⁴⁵ This is of special concern as **1** is both a substrate for, and inhibitor of, 2D6 and **13** is both a substrate for, and inhibitor of, 3A4. This means that **1** has significant potential to engender pharmacokinetic drug–drug interactions with atypical antipsychotics (clozapine, olanzapine, and risperidone), opiates, antidepressants (TCAs, MAOIs, and other SSRIs), and benzodiazepines.^{43–46} Overall, *N*-dealkylation is the major clearance mechanism for **1**. As **1** is a racemate, interest was drawn to the metabolism of the single enantiomers (*S*)-**1** and (*R*)-**1**. As mentioned earlier, the enantiomers are nearly equipotent at blocking serotonin reuptake, (*S*)-**1** is only 1.5-times more potent; however, the norfluoxetine metabolite (*S*)-**13** is 5- to 20-times more potent than (*R*)-**13**. The metabolism of (*S*)-**1** and (*R*)-**1** and (*S*)-**13** is highly dependent on CYP 2D6, while that of (*R*)-**13** is not, providing for less variable plasma concentrations of the (*R*)-enantiomer. A study examining the relative contributions of CYP enzymes to the metabolism of **1**, (*S*)-**1**, and (*R*)-**1** found dramatic differences.⁴⁵ These data led to discovery programs between Lilly and Sepracor for the individual enantiomers. However, while pursuing (*R*)-**1** as an antidepressant, it was found to have potential cardiotoxicity, and efforts ceased. As of 2002, efforts to pursue (*S*)-**1** for the treatment of migraine also appear to have ceased.^{47,48}

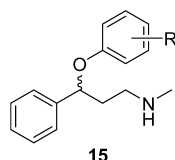
MEDICINAL CHEMISTRY, SAR, AND PHARMACOLOGY

After the antidepressant activities of TCAs were discovered, the pharmacological basis of this action was determined to be potent inhibition of monoamine uptake.^{49–54} Carlsson and co-workers noted that subtle structural modification among TCAs resulted in dramatic differences in serotonin (5-HT) and norepinephrine (NE) uptake in brain slices.^{53,54} Against this backdrop, Lilly scientists Molloy, Fuller, Rathburn, and Wong initiated a campaign to identify novel antidepressant agents lacking the side-effect profile of TCAs.^{17,18,21}

To access novel chemical space, Molloy then employed a phenoxyphenylpropyl amine (PPA) core from which to develop analogues; moreover, Wong postulated, based on the observations of Carlsson with TCAs, that subtle structural

changes within the PPA series might engender selective 5-HT uptake. Molloy then synthesized approximately 60 PPA analogues, which were found by Wong to inhibit 5-HT and/or NE uptake in synaptosomal preparations, an activity that was confirmed *in vivo* by Fuller and co-workers.^{21,22,24} As theorized, subtle structural changes did engender dramatic variations in monoamine uptake selectivity, and Table 1 highlights key

Table 1. Structures and SAR of PPA Analogues 15^a



compd	R	inhibition of uptake (K_i , nM)	
		5-HT	NE
15a	H	102	200
15b	2-OCH ₃	1371	2.4
15c	2-CH ₃	390	3.4
15d	2-F	898	5.3
15e	2-CF ₃	1498	4467
15f	3-CF ₃	166	1328
15g (1)	4-CF ₃	17	2703
15h	4-CH ₃	95	570
15i	4-OCH ₃	71	1207
15j	4-Cl	142	568
15k	4-F	638	1276

^aUptake inhibition data as reported by Wong et al.¹⁹

structure–activity relationships (SARs). The parent PPA **15a** (LY86032) was a potent 5-HT/NE uptake inhibitor (NE IC₅₀ = 200 nM, 5-HT IC₅₀ = 102 nM), while the addition of a 2-OMe moiety afforded **15b** (LY94939, nisoxetine), a highly selective NE uptake inhibitor (NE IC₅₀ = 2.4 nM, 5-HT IC₅₀ = 1.37 μM). Of the analogues screened, **1** (LY82816, fluoxetine oxalate) was the most potent and selective 5-HT uptake inhibitor (NE IC₅₀ = 2.7 μM, 5-HT IC₅₀ = 17 nM, >150-fold selective). In this same assay, the *N*-desmethyl metabolite norfluoxetine **13** displayed equivalent potency and selectivity to **1** (NE IC₅₀ = 2.2 μM, 5-HT IC₅₀ = 17 nM, >125-fold selective). From this point on, studies with **1** were performed on the HCl salt form (LY110140), and **1** was further advanced as a putative candidate.²⁰ Despite screening only a small library of compounds by today's standards, these efforts yielded a candidate that eventually entered the therapeutic marketplace as fluoxetine (Prozac).¹⁸ The single enantiomers of fluoxetine, (*S*)-**1** and (*R*)-**1** also displayed comparable potencies in this assay (5-HT IC₅₀'s of 16 and 21 nM, respectively); however, the single enantiomers of norfluoxetine, (*S*)-**13** and (*R*)-**13**, showed differential activity, with (*S*)-**13** having a 14-fold higher potency than (*R*)-**13** (5-HT IC₅₀'s of 20 and 268 nM, respectively). Whereas the earlier TCAs possessed significant activity at adrenergic, muscarinic, opiate, dopamine, GABA, and histamine receptors, leading to adverse events, **1** was generally clean versus these key antitargets: α₁-adrenergic (21 μM), α₂-adrenergic (22 μM), β-adrenergic (>10 μM), H₁ (1.9 μM), M₃ (6.6 μM), opiate (>10 μM), GABA (>10 μM), and D₂ (2.1 μM).^{17–23} However, both **1** and **13** do exhibit relatively strong affinities for the 5-HT_{2A} and 5-HT_{2C} receptors. Over the years, numerous reports on the full pharmacology of **1** and **13** have been disclosed; however, in order to allow direct comparisons

under standard assay conditions and uniform cell lines, we present recent data from the NIMH Psychoactive Drug Screening Program (Table 2).⁵⁵

Table 2. Pharmacological Profile of Fluoxetine (1) and *N*-Desmethylfluoxetine (13)^a

protein target	K_d (nM)	
	fluoxetine (1)	norfluoxetine (13)
SERT	2	38
DAT	6670	4102
NET	1560	6838
5-HT _{2A}	246	295
5-HT _{2B}	>10 000	5063
5-HT _{2C}	398	91
α ₁	2262	3900
α ₂	3090	>10 000
M ₁	702	1200
M ₂	2700	4600
M ₃	1000	760
M ₄	2900	2600
M ₅	2700	2200
H ₁	1240	>10 000
H ₃	7300	>10 000

^a K_d values as determined by the NIMH Psychoactive Drug Screening Program, <http://pdsp.med.unc.edu/pdsp.php> (accessed June 22, 2013).

Neurochemical studies demonstrated that, after administration of **1**, extracellular 5-HT concentrations were increased 1.5- to 4-fold across multiple brain regions.^{56,57} In addition to heightened 5-HT concentrations, a concomitant decrease in the synthesis and release of 5-HT, as well as 5-HIAA, was observed.²⁴ Therefore, administration of **1** appears to result in a feedback mechanism to reduce 5-HT turnover.^{56,57} Many reviews have focused on the preclinical behavioral pharmacology of **1**; therefore, we will only list key findings here. Administration of **1** has been shown to suppress feeding, attenuate aggression, reduce amphetamine self-administration, diminish compulsive behaviors, and induce an analgesic response. Fluoxetine has shown efficacy in multiple rodent models of depression, including learned helplessness and social isolation models, as well as in the forced swim and tail suspension tests.^{18,19}

Interestingly, the inhibition of 5-HT uptake by **1** occurs immediately upon accessing SERT, but full antidepressant efficacy is not acquired for 3–6 weeks.⁵⁸ Thus, the mechanism of action of **1** cannot be attributed exclusively to the acute elevation of 5-HT concentrations; in addition, more than 50% of preclinical studies fail to demonstrate elevated 5-HT levels after chronic administration with **1** or other SSRIs, suggesting other adaptive mechanisms.^{59,60} This temporal discrepancy has led to many hypotheses to account for the antidepressant activity of **1** and other SSRIs. For example, down-regulation of other 5-HT receptor subtypes, including as 5-HT_{1A} and 5-HT_{2C}, downstream neural adaptations, such as changes in the brain-derived neurotrophic factor (BDNF)-TrkB signaling pathway, decreases in plasma glutamate concentrations with concomitant up-regulation of forebrain glutamate receptor subunits, and increases in neurosteroid concentrations, such as 3-α-hydroxy-5-α-pregnane-2-one (3αα-ALLO), have all been postulated to account for the efficacy of SSRIs.^{9,61–63} Despite years of investigation and multiple lines of thought, the exact

mechanism by which fluoxetine relieves major depression symptoms is still not definitively known. Moreover, while SSRIs such as fluoxetine revolutionized the treatment of depression, they remain only partially effective, failing to relieve symptoms in >50% of depressed patients after multiple treatment regimens.⁶

APPROVED INDICATIONS

Fluoxetine is approved for the treatment of major depressive disorder (adult and pediatric), obsessive-compulsive disorder (adult and pediatric), acute depressive episodes in Bipolar I disorder, panic disorder, bulimia nervosa, and premenstrual dysphoric disorder.^{41,64}

ADVERSE EFFECTS AND DOSAGE

A number of adverse effects have been noted in patients taking fluoxetine. A major issue with **1** and other SSRIs concerns sexual dysfunction: erectile dysfunction, anorgasmia (inability to achieve orgasm), and diminished libido have all been well documented.^{41,64} However, noting the effects on anorgasmia, **1** has been used to prevent premature ejaculation.^{41,64} SSRIs, including **1**, can elicit discontinuation syndrome, and all SSRIs carry a black box warning for increased risk of suicide (especially for patients under 25). Some studies have found that **1** and other SSRIs can lead patients to commit violent acts and display aggressive behaviors. A host of other mild side effects have been reported and include headache, nausea, drowsiness, diarrhea, tremors, photosensitivity, and weight loss.^{41,64} However, compared to the early TCAs and MAOIs, the side effect profile is greatly improved, especially in cases of overdose. The FDA has also approved **1** for use during pregnancy, but only recommended when the benefits outweigh the risks and is not recommended for breast-feeding mothers.^{1,4,13,41}

HISTORY AND IMPORTANCE IN NEUROSCIENCE

The earliest classes of antidepressant medications, which dominated the clinical landscape from the 1950s through the 1970s, were discovered serendipitously.⁶⁵ Tricyclic antidepressants (TCAs) were developed in the 1950s in the wake of the discovery that chlorpromazine **16**, derived from early synthetic antihistamines, acted as an antipsychotic agent (Figure 2).^{6,11,65–68} This breakthrough led to the synthesis and pharmacological evaluation of other analogues of **16**, such as imipramine **17**, the first TCA to be developed.^{69–74} Numerous efforts followed the development of **17**, including the introduction of amitriptyline **18** by Merck in 1961.^{72–76} For many years, TCAs were the standard of care for depression.^{72,73} It was later discovered that TCAs exert their antidepressant effects by blocking both the serotonin transporter (SERT) and the norepinephrine transporter (NET), increasing extracellular concentrations of serotonin **19** and norepinephrine **20**, with little effect on dopamine (DA) **21**.^{49–53,77–81} However, TCAs have promiscuous pharmacology, with agonist or antagonist activity at multiple muscarinic, adrenergic, histamine, serotonin, and NMDA receptor subtypes, which engender significant adverse effects (e.g., agitation, dry mouth, and seizure).^{72,73,79} Moreover, TCAs are potent inhibitors of L-type calcium and sodium channels, leading to potentially lethal hypertension and arrhythmias.⁸² Thus, TCA overdose is often fatal, which limits the use of these compounds in a patient population which is at risk for suicidal behavior.

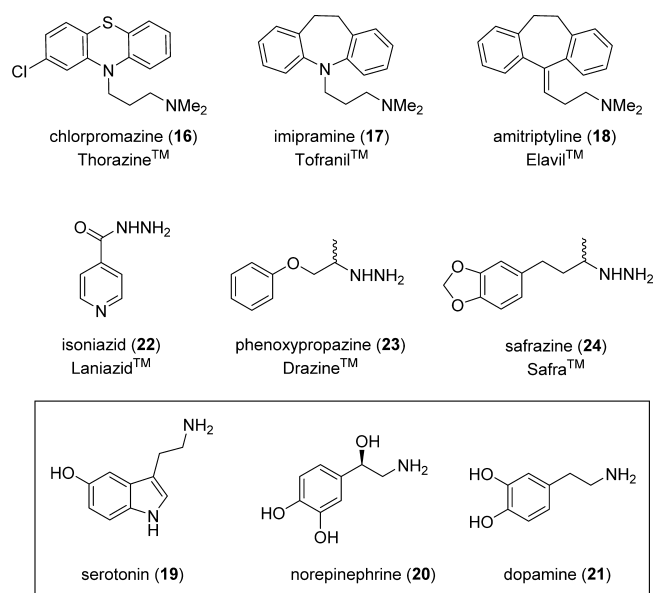


Figure 2. Structures of tricyclic antidepressants **17** and **18**, and first generation nonselective, irreversible monoamine oxidase inhibitors **22–24**, the first clinically available antidepressants. Also shown are the key neurotransmitters **19–21**, via which these early TCAs and MAOIs elicited their antidepressant effects.

The other major class of early antidepressants, monoamine oxidase inhibitors (MAOIs), was developed out of an effort to optimize the antituberculosis drug isoniazid **22**, and these compounds were only later found to possess antidepressant activity.⁸³ This discovery led to the development of additional MAOIs, such as **23** and **24**. MAOIs act to treat depression via inhibition of monoamine oxidase, which prevents the catabolism of neurotransmitters such as **19–21** (Figure 2).^{83–86} However, MAOIs also inhibit the breakdown of dietary amines. This can lead to hypertension if large amounts of foods containing tyramine are ingested, and can result in hyperserotonemia if large quantities of foods containing tryptophan are ingested.^{87–89} Moreover, these first generation MAOIs can engender serious pharmacodynamic drug–drug interactions with a wide variety of prescription and over-the-counter medications, which leads to difficulty in designing effective treatment regimens.

Despite the shortcomings of TCAs and MAOIs, their apparent efficacy in the treatment of patients suffering from depression led to the development of the “monoamine hypothesis of depression”. This hypothesis posits that depression results from low brain concentrations of monoamines, such as 5-HT, and catecholamines, such as NE and DA. Overall, most TCAs and MAOIs had a more robust effect on the regulation of NE than on 5-HT or DA; however, **17** and **18** were found to have a more dramatic effect on levels of 5-HT than of NE or DA.^{6–9,53,54} By combining this observation with clinical data, Carlsson and colleagues proposed that inhibition of 5-HT uptake may be responsible for the mood elevating profile of **17** and **18**.⁵⁴ Specifically, it had been previously noted in post-mortem studies that concentrations of 5-HT, and its major metabolite 5-hydroxyindole acetic acid (5-HIAA), were found to be lower in depressed patients that committed suicide than in those patients that died from other causes.^{90,91} Furthermore, MAOIs were found to be more efficacious if given in combination with precursors to 5-HT synthesis.^{92,93}

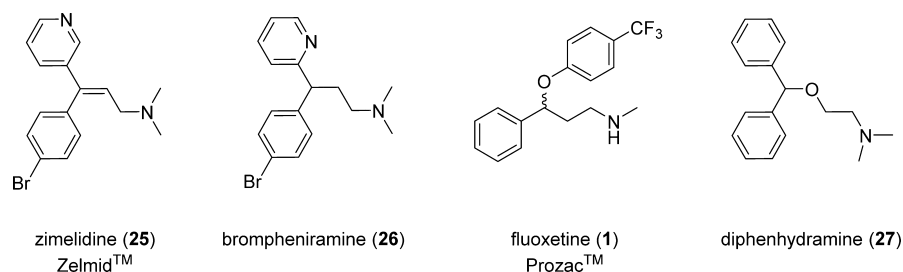


Figure 3. Structures of the first SSRIs **25** and **1**, and the antihistamines **26** and **27** from which they were developed.

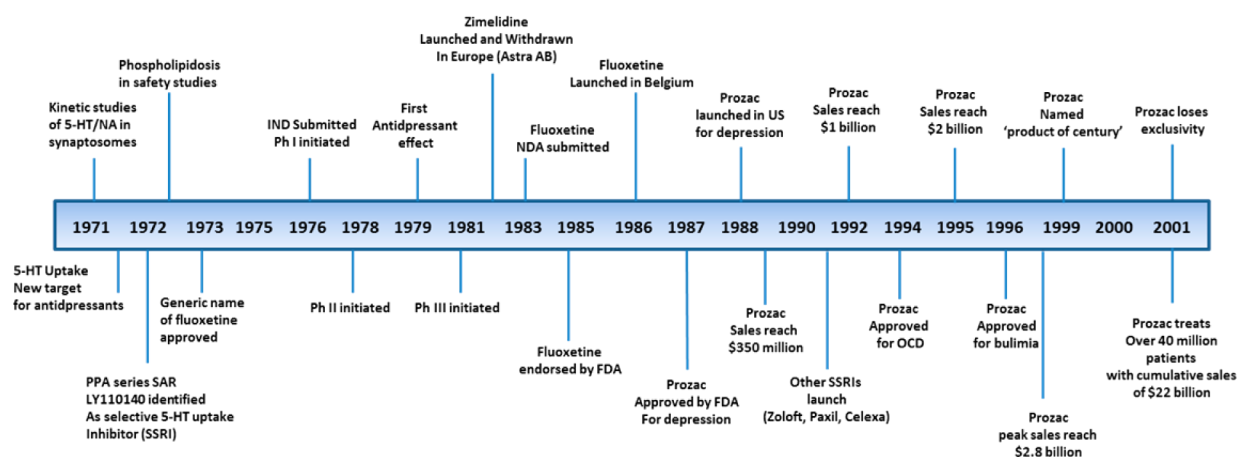


Figure 4. Timeline of the key milestones that led to the development of Prozac (**1**) and other SSRIs, highlighting key sales figures. Figure adapted from Wong et al.¹⁸

Finally, there were lower concentrations of 5-HIAA in bodily fluids of depressed patients than in those of healthy controls.⁹⁴ Overall, this evidence pointed researchers in the early 1970s to target 5-HT reuptake as a novel therapeutic approach to treat depression.

Thus, Carlsson and Astra AB developed zimelidine **25** in the 1970s, and launched this drug in Europe in 1982, making it the first selective serotonin reuptake inhibitor (SSRI) to be marketed for depression (Figure 3).⁹⁵ Like the earlier TCAs, **25** was derived from an antihistamine, brompheniramine **26**. Unfortunately, **25** was only on the market a short time before it was withdrawn due to induction of serious adverse events, including Guillain-Barré syndrome, a potentially fatal neuropathy.^{95,96} Following this, Astra AB terminated all SSRI development. Fortunately, Eli Lilly & Co. had a parallel SSRI discovery program, also based on an antihistamine, diphenhydramine **27**, that ultimately produced fluoxetine **1** (Prozac).

As Wong et al. detailed in a personal account of the development of fluoxetine, the road to IND and the drug that would become known as Prozac was a long, winding, and often bumpy road, replete with challenges and obstacles from within Lilly and from Lilly advisors (Figure 4).¹⁸ Shortly after a development team formed in 1973 to shepherd the product development, it was almost permanently derailed by concerns about phospholipidosis in the lungs (an excessive accumulation of phospholipids).¹⁸ During this time, Lilly scientists first disclosed **1** as an SSRI at the 1974 annual meeting of the Federation of American Societies for Experimental Biology and the American Society of Pharmacology and Experimental Therapeutics.¹⁹ In the same year, they published the SAR and pharmacology of **1** in the now seminal *Life Sciences* paper.²¹ After a 9 month delay, safety studies resumed after commentary

from the Neuropharmacology division of the FDA. In 1976, 6 years after **1** was first synthesized and assayed, all of the IND-enabling studies in animals were completed, and an IND was filed with the FDA.¹⁹ Later that same year, Lemberger (a Lilly clinician) first dosed **1** in humans, and **1** was found to be well tolerated in humans up to doses of 90 mg. However, in the first phase II trial in depressed patients, the drug did not differentiate from placebo, and this result almost halted the clinical development program. The basic science team was later informed that the lack of efficacy in phase II might have been due to the fact that the patients enrolled had previously failed to respond to other antidepressants.¹⁸ Thus, Lilly decided to repeat the trial with nontreatment refractory patients, but a 2 year search ensued for an appropriate clinician to oversee the trial. Slater and Stark were recruited to run the phase II and III trials with **1**, and quickly provided a successful conclusion to the clinical development of fluoxetine, where it demonstrated efficacy in patients with major depression, yet lacked the undesired side effects of TCAs (blurred vision, dry mouth, and sedation) and was devoid of cardiovascular issues.^{18,97,98} The results were submitted to the FDA in 1983, 7 years after the first human dose of **1** was administered. At this time, Astra AB launched **25** in Europe, and the Lilly team was disappointed that they were not first to market; however, the eventual recall of **25** ultimately led to **1** being the first SSRI approved in the United States and, arguably, the most successful of the SSRIs.^{95,96} Yet, approval from the FDA was not rapid. Lilly did not receive approval of **1** for over 2 years after their submission, finally receiving approval on December 29, 1987, a journey from bench to bedside of over 16 years! In January of 1988, **1**, under the trade name Prozac, was launched in the United States.¹⁹

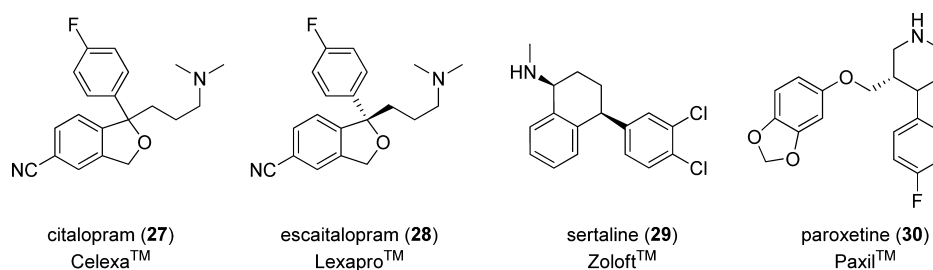


Figure 5. Structures of representative SSRIs 27–30 that followed zimelidine (25) and fluoxetine (1), all of which became blockbuster antidepressants (i.e., sales in excess of US \$1 billion).

1 was the first SSRI to be marketed in the United States, and it fundamentally changed not only the treatment of depression but also the world's perception of depression. Prozac was heralded as a safe and effective, once-daily medication for the treatment of depression with widespread adoption by physicians. Despite internal Lilly estimates of the depression market valued at about US \$200 million, 1 went on to quickly surpass that sales estimate, and within a year of launch, Prozac garnered annual sales of US \$350 million.¹⁸ By 1992, 1 reached annual sales in excess of US \$1 billion, over US \$2 billion by 1995, and sales peaked at US \$2.8 billion in 1998. By the time 1 lost patent protection in 2001, over 40 million people had taken 1 and total worldwide sales were estimated at US \$22 billion.¹⁸ From 1988 to 2001, the indications for 1 increased to include obsessive-compulsive disorder, panic disorder, anorexia nervosa, and bulimia nervosa.⁴¹ Even considering its massive commercial success, the impact of 1 goes far beyond sales figures. Fluoxetine became, and remains today, an important tool to understand and clarify the role of 5-HT in the CNS. For instance, searches of both PubMed and Web of Science return over 10 000 papers published on various aspects of 1 to dissect the role of 5-HT in CNS physiology.^{99,100}

The success of 1 prompted other companies to develop SSRIs (Figure 5), and the SSRI class quickly achieved sales in excess of US \$10 billion, with multiple SSRIs achieving blockbuster status (sales in excess of US \$1 billion), and hundreds of millions of prescriptions written for SSRIs – depression became a mainstream disorder with a clear treatment paradigm.^{5,6,42} Notable SSRIs that quickly followed Prozac include Lundbeck's racemic citalopram 27 (later sold as the single (S)-enantiomer, escitalopram 28), Pfizer's sertraline 29, and GSK's paroxetine 30, all of which launched in the United States prior to 1992.^{5,6,42,101} Due to the influx of generic versions of 1 in 2001, Lilly rebranded Prozac as Sarafem for premenstrual dysphoric disorder (PMDD), a severe form of premenstrual syndrome, to boost sales.^{5,6,41,42,102}

Prozac entered mainstream pop culture and became part of common parlance to an extent unequalled by any drug before it. Prozac graced the cover of *Newsweek* in 1990, which heralded it as “a breakthrough drug for depression”, and *Fortune* proclaimed Prozac as one of the “Pharmaceutical Products of the Century” in 1999.^{103,104} Beyond this, Prozac found its way into book titles, songs, and band names and is heavily referenced in movie and TV scripts. A notable example is the memoir of Elizabeth Wurtzel in 1994, “Prozac Nation”, which later became a feature film.¹⁰⁵ Moreover, Prozac is defined in Webster's dictionary.¹⁰⁶ All of this exposure has helped shed light on depression, and reduced the stigma associated with it, which enabled more depressed patients to seek treatment. While recent studies, such as the STAR*D study, indicate that

only a third of depressed patients achieve remission with classical SSRIs and that onset of action can require 3–6 weeks, the impact of fluoxetine is obvious.^{107,108} This compound has been a major driver in the field of 5-HT research, has inspired a new therapeutic landscape for major depression, and has helped alter the way in which society perceives and responds to depression. For all of these reasons, fluoxetine (1 or Prozac) is a true classic in chemical neuroscience, and a notable example for the *Classics in Chemical Neuroscience* series.¹⁰⁹

AUTHOR INFORMATION

Corresponding Author

*E-mail: craig.lindsley@vanderbilt.edu.

Notes

The authors declare no competing financial interest.

REFERENCES

- (1) For up-to date information on depression from the National Institute of Mental Health, see: www.nimh.nih.gov/health/topics/depression.
- (2) Smith, K. (2011) Trillion dollar brain drain. *Nature* 478, 5–8.
- (3) Artigas, F. (2013) Future directions for serotonin and antidepressants. *ACS Chem. Neurosci.* 4, 5–8.
- (4) American Psychiatric Association. (2013) *Diagnostic and Statistical Manual of Mental Disorders*, 5th ed., American Psychiatric Press, Washington, DC.
- (5) Lader, M. H. (1998) *The Management of Depression* (Checkley, S., Ed.), pp 18–211, Blackwell Press, Oxford, U.K.
- (6) Glennon, R. A., and Iversen, L. (2010) Antidepressants. In *Burger's Medicinal Chemistry, Drug Discovery and Development: CNS Disorders* (Abraham, D. J., Rotella, D. P., Eds.), 7th ed., pp 219–264, John Wiley & Sons, Hoboken, NJ.
- (7) Kessler, R. C., Chiu, W. T., Demler, O., and Walter, M. S. (2005) Prevalence, severity and comorbidity of 12-month DSM-IV disorders in the national comorbidity survey replication. *Arch. Gen. Psychiatry* 62, 617–627.
- (8) Sullivan, P. F., Neale, M. C., and Kendler, K. S. (2000) Genetic epidemiology of major depression: review and meta-analysis. *Am. J. Psychiatry* 157, 1552–1562.
- (9) Moret, C., and Briley, M. (1992) Effect of antidepressant drugs on monamine synthesis in brain in vivo. *Neuropharmacology* 31, 679–684.
- (10) Culppepper, L. (2010) Why do you need to move beyond first-line therapy for major depression? *J. Clin. Psychiatry* 71, 4–9.
- (11) Hodes, G. E., and Russo, S. J. (2012) The neurobiology of depression and anxiety: how do we change from models of drug efficacy to understanding mood and anxiety disorders? In *Drug Discovery for Psychiatric Disorders* (Rankovic, Z., Bingham, M., Nestler, E. J., and Hargreaves, R., Eds.), pp 159–183, The Royal Society of Chemistry, Cambridge, U.K.
- (12) Metzner, R. J. (2013) The impact of neurochemical mediators on antidepressant effectiveness. *ACS Chem. Neurosci.* 4, 1245–1248.

- (13) Gelenberg, A. G., Freeman, M. P., Markowitz, J. C., Rosenbaum, J. F., Thase, M. E., Trivedi, M. H., and Van Rhoads, R. S. (2010) *Practice Guideline for the Treatment of Patients With Major Depressive Disorder*, Third ed., American Psychiatric Association, Arlington, VA.
- (14) For societal and workplace impact of depression, see: www.caremanagementfordepression.org.
- (15) Bernois, G. E. (1998) Melancholia and depression during the 19th century: A conceptual history. *Br. J. Psych.* **153**, 298–304.
- (16) For information on the WHO-ICD10, see: www.who.int.ICD-10.
- (17) Molloy, B., and Schmiegel, K. K. (1982) Aryloxyphenylpropylamines. US 4,314,081 (Eli Lilly and Company).
- (18) Wong, D. T., Perry, K. W., and Bymaster, F. P. (2005) The discovery of fluoxetine hydrochloride (Prozac). *Nat. Rev. Drug Discovery* **4**, 764–774.
- (19) Wong, D. T., Bymaster, F. P., and Engleman, E. A. (1995) Prozac (fluoxetine, Lilly 110140), the first selective serotonin uptake inhibitor and an antidepressant drug (in US): twenty years since its first publication. *Life Sci.* **57**, 411–441.
- (20) Stark, P., and Hardison, C. D. (1985) A review of multicenter controlled studies of fluoxetine vs imipramine and placebo in outpatients with major depressive disorder. *J. Clin. Psychiatry* **46**, 53–58.
- (21) Wong, D. T., Horng, J. S., Bymaster, F. P., Hauser, K. L., and Molloy, B. B. (1974) A selective inhibitor of serotonin uptake: Lilly 110140, 3-(*p*-trifluoromethylphenoxy)-*N*-methyl-3-phenylpropylamine. *Life Sci.* **15**, 471–479.
- (22) Fuller, R. W., Perry, K. W., and Molloy, B. B. (1974) Effect of an uptake inhibitor on serotonin metabolism in rat brain: studies with 3-(*p*-trifluoromethylphenoxy)-*N*-methyl-3-phenylpropylamine (Lilly 110140). *Life Sci.* **15**, 1161–1171.
- (23) Fuller, R. W., Wong, D. T., and Robertson, D. W. (1991) Fluoxetine, a selective inhibitor of serotonin uptake. *Med. Res. Rev.* **11**, 17–34.
- (24) Wong, D. T., Bymaster, F. P., Horng, J. S., and Molloy, B. B. (1975) A new selective inhibitor for uptake of serotonin into synaptosomes of rat brain: 3-(*p*-trifluoromethylphenoxy)-*N*-methyl-3-phenylpropylamine. *J. Pharmacol. Exp. Ther.* **193**, 804–811.
- (25) Robertson, D. W., Krushinski, J. H., Fuller, R. W., and Leander, J. D. (1988) Absolute configurations and pharmacological activities of the optical isomers of fluoxetine, a selective serotonin-uptake inhibitor. *J. Med. Chem.* **31**, 1412–1417.
- (26) Li, J. J., Johnson, D. S., Sliskovic, D. R., and Roth, B. D. (2004) Antidepressants. In *Contemporary Drug Synthesis*, pp125–145, John Wiley & Sons, Hoboken, NJ.
- (27) Corey, E. J., and Reichard, G. A. (1989) Enantioselective and practical synthesis of *R*- and *S*-fluoxetine. *Tetrahedron Lett.* **30**, 5207–5210.
- (28) Sakuraba, S., and Achiwa, K. (1995) Asymmetric reactions catalyzed by chiral metal complexes. LXVI. Efficient asymmetric hydrogenation of β - and γ -amino ketone derivatives leading to practical syntheses of fluoxetine and eprozinol. *Chem. Pharm. Bull.* **43**, 784–753.
- (29) Gao, Y., and Sharpless, K. B. (1988) Asymmetric synthesis of both enantiomers of tomoxetine and fluoxetine. Selective reduction of 2,3-epoxycinnamyl alcohol with Red-Al. *J. Org. Chem.* **53**, 4081–4084.
- (30) Pandey, R. K., Fernandes, R. A., and Kumar, P. (2002) An asymmetric dihydroxylation route to enantiomerically pure norfluoxetine and fluoxetine. *Tetrahedron Lett.* **43**, 4425–4426.
- (31) Ali, I. S., and Sudalai, A. (2002) Pd-Catalyzed kinetic resolution of benzylic alcohols: a practical synthesis of (*R*)-tomoxetine and (*S*)-fluoxetine hydrochlorides. *Tetrahedron Lett.* **43**, 5435–5436.
- (32) Miles, W. H., Fialcowitz, E. J., and Halstead, E. S. (2001) Enantioselective synthesis of (*S*)- and (*R*)-fluoxetine hydrochloride. *Tetrahedron* **57**, 9925–9929.
- (33) Trost, B. M., Fraisse, P. L., and Ball, Z. T. (2002) A stereospecific ruthenium-catalyzed allylic alkylation. *Angew. Chem., Int. Ed.* **41**, 1059–1061.
- (34) Kumar, A., Ner, D. H., and Dike, S. Y. (1991) A new chemoenzymatic enantioselective synthesis of *R*-(-)-tomoxetine, (*R*)- and (*S*)-fluoxetine. *Tetrahedron Lett.* **32**, 1901–1904.
- (35) Chenevert, R., Fortier, G., and Bel Rhlid, R. (1992) Asymmetric synthesis of both enantiomers of fluoxetine via microbiological reduction of ethyl benzoylacetate. *Tetrahedron* **48**, 6769–6776.
- (36) Schneider, M. P., and Goergens, U. (1992) An efficient route to enantiomerically pure antidepressants: tomoxetine, nisoxetine and fluoxetine. *Tetrahedron: Asymmetry* **3**, 525–528.
- (37) Bracher, F., and Litz, T. (1996) An efficient chemoenzymatic route to the antidepressants (*R*)-fluoxetine and (*R*)-tomoxetine. *Bioorg. Med. Chem.* **4**, 877–880.
- (38) Liu, H.-L., Hoff, B. H., and Anthonsen, T. (2000) Chemoenzymatic synthesis of the non-tricyclic antidepressants Fluoxetine, Tomoxetine and Nisoxetine. *J. Chem. Soc., Perkins Trans. 1*, 1767–1769.
- (39) Kamal, A., Ramesh Khanna, G. B., and Ramu, R. (2002) Chemoenzymatic synthesis of both enantiomers of fluoxetine, tomoxetine and nisoxetine: lipase-catalyzed resolution of 3-aryl-3-hydroxypropanenitriles. *Tetrahedron: Asymmetry* **13**, 2039–2051.
- (40) Ahmed-Omer, B., and Sanderson, A. J. (2011) Preparation of fluoxetine by multiple flow processing steps. *Org. Biomol. Chem.* **9**, 3854–3862.
- (41) Prozac [package insert] Eli Lilly & Co, Indianapolis, IN, 2013. For more information see, www.lilly.com.
- (42) For information on sales and trade names, see: www.imshealth.com.
- (43) Hiemke, C., and Hartter, S. (2000) Pharmacokinetics of selective serotonin reuptake inhibitors. *Pharmacol. Ther.* **85**, 11–28.
- (44) Margolis, J. M., O'Donnell, J. P., Mankowski, D. C., Ekins, S., and Obach, R. S. (2000) (*R*)-, (*S*)- and racemic fluoxetine *N*-demethylation by human cytochrome P450 enzymes. *Drug Metab Dispos.* **28**, 1187–1191.
- (45) Mandrioli, R., Forti, G. C. F., and Raggi, M. A. (2006) Fluoxetine metabolism and pharmacological interactions: The role of cytochrome P450. *Curr. Drug Metab.* **7**, 127–133.
- (46) Gossen, D., de Suray, J.-M., Vandenhende, F., Onkenlix, C., and Gangji, D. (2002) Influence of fluoxetine on olanzapine pharmacokinetics. *AAPS PharmSci.* **4**, 1–6.
- (47) Thayer, A. (2000) Eli Lilly pulls the plug on Prozac isomer drug. *C&E News* **78**, 8.
- (48) Braddock, M. (2005) Prozac. *C&E News* **83**, 104.
- (49) Dengler, H. J., and Titus, E. O. (1961) The effect of drugs on the uptake of isotopic norepinephrine in various tissues. *Biochem. Pharmacol.* **8**, 64.
- (50) Hertting, G., Axelrod, J., and Whitby, L. G. (1961) Effect of drugs on the uptake and metabolism of H^3 -norepinephrine. *J. Pharmacol. Exp. Ther.* **134**, 146–153.
- (51) Glowinski, J., and Axelrod, J. (1964) Inhibition of uptake of tritiated-noradrenaline in the intact rat brain by imipramine and structurally related compounds. *Nature* **204**, 1318–1319.
- (52) Iversen, L. L. (1971) Role of transmitter uptake mechanisms in synaptic neurotransmission. *Br. J. Pharmacol.* **41**, 571–591.
- (53) Carlsson, A., Fuxe, K., Hamberger, B., and Lindqvist, M. (1966) Biochemical and histochemical studies on the effects of imipramine-like drugs and (+)-amphetamine on central and peripheral catecholamine neurons. *Acta Physiol. Scand.* **67**, 481–497.
- (54) Carlsson, A., Corrodi, H., Fuxe, K., and Hökfelt, T. (1969) Effects of antidepressant drugs on the depletion of intraneuronal brain 5-hydroxytryptamine stores caused by 4-methyl- α -ethylmetatyramine. *Eur. J. Pharmacol.* **5**, 357–366.
- (55) Receptor binding profiles were generously provided by the National Institute of Mental Health's Psychoactive Drug Screening Program, Contract # HHSN-271-2008-00025-C (NIMH PDSP). The NIMH PDSP is Directed by Bryan L. Roth, M.D., Ph.D. at the University of North Carolina at Chapel Hill and Project Officer Jamie Driscoll at NIMH, Bethesda, MD.

- (56) Perry, K. W., and Fuller, R. W. (1992) Effect of fluoxetine on serotonin and dopamine concentration in microdialysis fluid from rat striatum. *Life Sci.* 50, 1683–1690.
- (57) Fuller, R. W., Snoddy, H. D., and Molloy, B. B. (1975) Potentiation of the L-5-hydroxytryptophan-induced elevation of plasma corticosterone levels in rats by a specific inhibitor of serotonin uptake. *Res. Commun. Chem. Pathol. Pharmacol.* 10, 193–196.
- (58) Beasley, C. M., Jr., Nilsson, M. E., Koke, S. C., and Gonzales, J. S. (2000) Efficacy, adverse events, and treatment discontinuations in fluoxetine clinical studies of major depression: a meta-analysis of the 20-mg/day dose. *J. Clin. Psychiatry* 61, 722–728.
- (59) Andrews, A. M. (2009) Does chronic antidepressant treatment increase extracellular serotonin? *Front. Neurosci.* 3, 246–247.
- (60) Luellen, B. A., Gilman, T. L., and Andrews, A. M. (2010) Presynaptic adaptive response to constitutive versus acute pharmacologic inhibition of serotonin uptake. In *Experimental Models in Serotonin Transporter Research* (Kalueff, A. V., and LaPorte, J. L., Eds.), pp 1–42, Cambridge University Press, Cambridge.
- (61) Wernicke, J. F. (1985) The side effect profile and safety of fluoxetine. *J. Clin. Psychiatry* 46, 59–67.
- (62) Castren, E., and Rantamaki, T. (2010) The role of BDNF and its receptors in depression and antidepressant drug action: Reactivation of developmental plasticity. *Dev. Neurobiol.* 70, 289–297.
- (63) Price, R. B., Nock, M. K., Charney, D. S., and Mathew, S. J. (2009) Effects of Intravenous Ketamine on Explicit and Implicit Measures of Suicidality in Treatment-Resistant Depression. *Biol. Psychiatry* 66, 522–526.
- (64) Pinna, G., Costa, E., and Guidotti, A. (2006) Fluoxetine and norfluoxetine stereospecifically and selectively increase brain neurosteroid content at doses that are inactive on 5-HT reuptake. *Psychopharmacology* 186, 362–372.
- (65) For more information on FDA approved indications, see: www.fda.gov.
- (66) Preskorn, S. H. (2010) CNS drug development: Part I: The early period of CNS drugs. *J. Psychiatr. Pract.* 16, 334–339.
- (67) Delay, J., Deniker, P., Tardieu, Y., and Lempereire, T. (1955) Neuroleptic medications and cures in psychiatry: preliminary trials with reserpine; comparison with the effects of chlorpromazine. *La Presse Medicale* 63, 663–665.
- (68) Blair, D. (1960) Chlorpromazine and schizophrenia: The role of the practitioner. *The Practitioner*, 184338–184344.
- (69) Markowe, M., Steinert, J., and Heyworth-Davis, F. (1967) Insulin and chlorpromazine in schizophrenia: a ten year comparative survey. *Br. J. Psychiatry* 113, 1101–1106.
- (70) Azine, H., and Vispo, R. H. (1958) Imipramine; a new antidepressant compound. *Am. J. Psychiatry* 115, 245–246.
- (71) Kuhn, R. (1958) The treatment of depressive states with G 22355 (imipramine hydrochloride). *Am. J. Psychiatry* 115, 459–464.
- (72) Feldman, P. E. (1959) Preliminary report on imipramine (tofranil). (1959). *Am. J. Psychiatry* 115, 1117–1118.
- (73) Lader, M. (2004) *Handb. Exp. Pharmacol.* 157, 185–208 (Antidepressants).
- (74) Gilman, P. K. (2007) Tricyclic antidepressant pharmacology and therapeutic drug interactions updated. *Br. J. Pharmacol.* 151, 737–748.
- (75) Kuhn, R. (1970) In *Discoveries in biological psychiatry* (Ayd, J. F., and Blackwell, B., Eds.), pp 205–217, Lippincott, Philadelphia, PA.
- (76) Vaisberg, M., and Saunders, J. C. (1961) Amitriptyline in the treatment of depressive states (a pilot study). *Dis. Nerv. Syst.*, 22334–22338.
- (77) Barsa, J. A., and Saunders, J. C. (1961) Amitriptyline (Elavil), a new antidepressant. *Am. J. Psychiatry*, 117730–117740.
- (78) Sulser, F., Watts, J., and Brodie, B. B. (1962) On the mechanism of antidepressant action of imipramine-like drugs. *Ann. N.Y. Acad. Sci.* 96, 279–286.
- (79) Ross, S. B., and Renyi, A. L. (1967) Inhibition of tritiated catecholamines by antidepressants and related agents. *Eur. J. Pharmacol.* 2, 181–186.
- (80) Bourin, M. (1990) Is it possible to predict the activity of a new antidepressant in animals with simple psychopharmacological tests? *Fundam. Clin. Pharmacol.* 4, 49–64.
- (81) Corrodi, H., and Fuxe, K. (1968) The effect of imipramine on central monoamine neurons. *J. Pharm. Pharmacol.* 20, 230–231.
- (82) Ross, S. B., and Renyi, A. L. (1975) Tricyclic antidepressant agents. I. Comparison of the inhibition of the uptake of 3-H-noradrenaline and 14-C-5-hydroxytryptamine in slices and crude synaptosome preparations of the midbrain-hypothalamus region of the rat brain. *Acta Pharmacol. Toxicol.* 36, 382–394.
- (83) Viewig, W., Victor, R., and Wood, M. A. (2004) Tricyclic antidepressants, QT interval prolongation and torsade de pointes. *Psychosomatics* 45, 371–377.
- (84) West, E. D., and Dally, P. J. (1959) Effects of iproniazid in depressive syndromes. *Br. Med. J.* 1, 1491–1494.
- (85) Remick, R. A., and Froese, C. (1990) Monoamine oxidase inhibitors: Clinical review. *Can. Fam. Physician* 36, 1151–1155.
- (86) Himmelhoch, J. M., Fuchs, C. Z., and Symons, B. J. (1982) A double-blind study of tranylcypromine treatment of major anergic depression. *J. Nerv. Ment. Dis.* 170, 628–634.
- (87) Rowan, P. R., Paykel, E. S., and Parker, R. R. (1982) Phenelzine and amitriptyline: effects on symptoms of neurotic depression. *Br. J. Psychiatry* 140, 475–483.
- (88) Blackwell, B., Marley, E., Price, J., and Taylor, D. (1967) Hypertensive interactions between monoamine oxidase inhibitors and foodstuffs. *Br. J. Psychiatry* 113, 349–365.
- (89) Thase, M. E. (2012) The role of monoamine oxidase inhibitors in depression treatment guidelines. *J. Clin. Psychiatry* 73, 10–16.
- (90) Weil-Malherbe, H., and Szara, S. I. (1971) *The Biochemistry of Functional and Experimental Psychosis*, pp 57–76, Thomas, Springfield, IL.
- (91) Shaw, D. M., Camps, F. E., and Eccleston, E. (1967) 5-Hydroxytryptamine in the hind brain of depressive suicides. *Br. J. Psychiatry* 113, 1407–1411.
- (92) Bourne, H. R., Bunney, W. E., Jr., Colburn, R. W., Davis, J. M., Davis, J. N., Shaw, D. M., and Coppen, A. J. (1968) Noradrenaline, 5-hydroxytryptamine, and 5-hydroxyindoleacetic acid in hindbrains of suicidal patients. *Lancet* 2, 805–808.
- (93) Coppen, A., Shaw, D. M., and Farrell, J. P. (1963) Potentiation of the antidepressive effect of a monoamine-oxidase inhibitor by tryptophan. *Lancet* 1, 79–81.
- (94) Pare, C. M. (1963) Potentiation of monoamine oxidase inhibitors by tryptophan. *Lancet* 2, 527–528.
- (95) Ashcroft, G. W., Crawford, T. B., Eccleston, D., Sharman, D. F., MacDougall, E. J., Stanton, J. B., and Binns, J. K. (1966) 5-hydroxyindole compounds in the cerebrospinal fluid of patients with psychiatric or neurological diseases. *Lancet* 2, 1049–1052.
- (96) Heel, R. C., Morley, P. A., Brogden, R. N., Carmine, A. A., Speight, T. M., and Avery, G. S. (1982) Zimelidine: a review of its pharmacological properties and therapeutic efficacy in depressive illness. *Drugs* 24, 169–206.
- (97) Bengtsson, B. O., Wiholm, B. E., Myrhed, M., and Walinder, J. (1994) Adverse experiences during treatment with zimelidine on special license in Sweden. *Int. Clin. Pharmacol.* 9, 55–61.
- (98) Stokes, P. E., and Holtz, A. (1997) Fluoxetine tenth anniversary update: the progress continues. *Clin. Ther.* 19, 1135–1250.
- (99) Stokes, P. E. (1998) Ten years of fluoxetine. *Depression Anxiety* 8, 1–4.
- (100) For publications relating to fluoxetine, see: <http://www.ncbi.nlm.nih.gov/pubmed/> (search string fluoxetine).
- (101) For publications relating to fluoxetine, see: <http://www.webofknowledge.com> (search string fluoxetine).
- (102) Lacasse, J. R., and Leo, J. (2005) Serotonin and depression: A disconnect between the advertisements and the scientific literature. *PLoS Med* 2, e392.
- (103) Moore, A. (2007) Eternal sunshine. *The Observer*, 12 May 2007.
- (104) *Newsweek*, 26 March 1990.
- (105) *Fortune*, 22 November 1999.

- (106) Wurtzel, E. (1995) *Prozac Nation*, Riverhead Books, New York.
- (107) For the online Webster's dictionary, see: <http://www.merriam-webster.com/> (search Prozac).
- (108) Rush, A. J., Trivedi, M. H., Wisniewski, S. R., Nierenberg, A. A., Stewart, J. W., Warden, D., Niederehe, G., Thase, M. E., Lavori, P. W., Lebowitz, B. D., McGrath, P. J., Rosenbaum, J. F., Sackeim, H. A., Kupfer, D. J., Luther, J., and Fava, M. (2006) Acute and longer-term outcomes in depressed outpatients requiring one or several treatment steps: a STAR*D report. *Am. J. Psychiatry* 163, 1905–1917.
- (109) Wisniewski, S. R., Rush, A. J., Bryan, C., Shelton, R., Trivedi, M. H., Marcus, S., Husain, M. M., Hollon, S. D., and Fava, M. (2007) STAR*D Investigators. Comparison of quality of life measures in a depressed population. *J. Nerv. Ment. Dis.* 195, 219–25.
- (110) Wenthur, C. J., and Lindsley, C. W. (2013) Classics in Chemical Neuroscience: Clozapine. *ACS Chem. Neurosci.* 4, 1018–1025.